

Stainless Steel-Cabinet "U" handles

SPECIFICATION

Types

- Type **A**: Mounting from the back (threaded blind bore)
- Type **B**: Mounting from the operator's side

Stainless Steel

d₁ = 20: Solid material

d₁ = 28: Tube-Ø 28 x 2

- AISI 304

- matt shot-blasted

Threaded bush / Mounting stud

Stainless Steel AISI 303

Grub screw (Type B)

d₁ = 20: DIN 914-M5-6-NI

d₁ = 28: DIN 914-M6-8-NI



INFORMATION

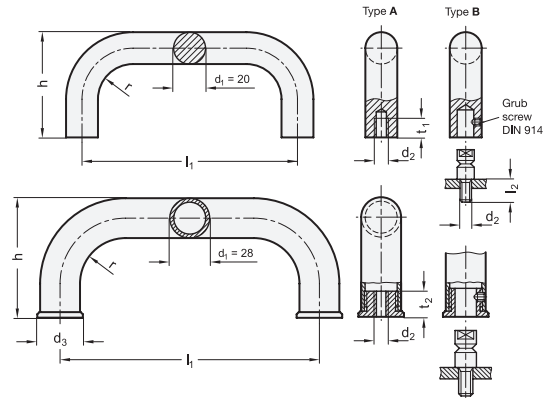
Stainless Steel-Cabinet "U" handles GN 426.5 can be mounted from the back (type A) as well as from the operator's side (type B). In this case the stud is first screwed in from the machine side and then the handle is pushed on and secured with the grub screw.

Both mounting methods allow the mounting of a pair of handles in opposite position. This method could be used e.g. on doors (double handle). In general, a mounting stud with special length l₂ might be required.

The manufacturing process (bending) allows the production of **special lengths** in relatively small quantities.

TECHNICAL INFORMATION

- Stainless Steel characteristics (see page A26)
- Load rating information (see page A35)



GN 426.5

STAINLESS STEEL

Description	d ₁	l ₁ ±0.5	l ₁ ±0.3	d ₂	d ₃	h	l ₂	r ≈	t ₁	t ₂	⚖
GN 426.5-20-200-A	20	200	-	M 8	-	68	20	22	15	-	700
GN 426.5-20-250-A	20	250	-	M 8	-	68	20	22	15	-	696
GN 426.5-20-300-A	20	300	-	M 8	-	68	20	22	15	-	900
GN 426.5-20-350-A	20	350	-	M 8	-	68	20	22	15	-	1080
GN 426.5-20-200-B	20	-	200	M 8	-	68	20	22	-	-	706
GN 426.5-20-250-B	20	-	250	M 8	-	68	20	22	-	-	829
GN 426.5-20-300-B	20	-	300	M 8	-	68	20	22	-	-	957
GN 426.5-20-350-B	20	-	350	M 8	-	68	20	22	-	-	1086
GN 426.5-28-250-A	28	250	-	M 10	32	90	20	32	-	17	550
GN 426.5-28-300-A	28	300	-	M 10	32	90	20	32	-	17	625
GN 426.5-28-350-A	28	350	-	M 10	32	90	20	32	-	17	680
GN 426.5-28-400-A	28	400	-	M 10	32	90	20	32	-	17	729
GN 426.5-28-250-B	28	-	250	M 10	32	90	20	32	-	-	625
GN 426.5-28-300-B	28	-	300	M 10	32	90	20	32	-	-	690
GN 426.5-28-350-B	28	-	350	M 10	32	90	20	32	-	-	720
GN 426.5-28-400-B	28	-	400	M 10	32	90	20	32	-	-	820